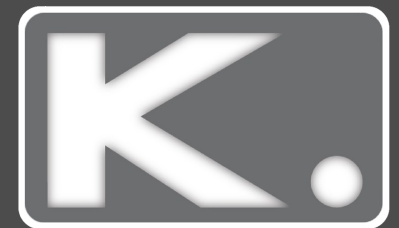
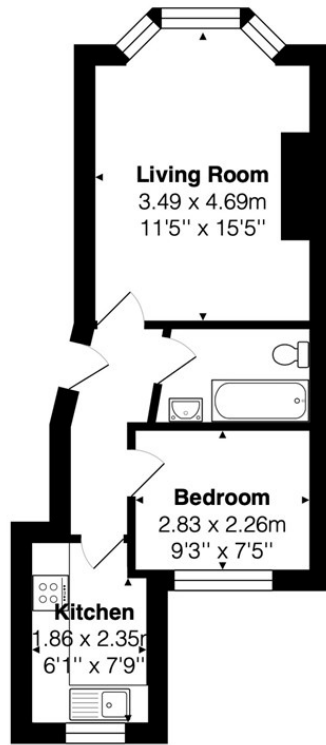




**1 Bed  
Apartment  
located in Hove**

**Asking Price £220,000**





**Living Room**  
3.49 x 4.69m  
11'5" x 15'5"

**Bedroom**  
2.83 x 2.26m  
9'3" x 7'5"

**Kitchen**  
1.86 x 2.35m  
6'1" x 7'9"

**First Floor**

Area: 35.9 m<sup>2</sup> ... 386 ft<sup>2</sup>

Energy Efficiency Rating		Current	Potential
Very energy efficient - lower running costs			
(92 plus) A			
(81-91) B			
(69-80) C			79
(55-68) D		65	
(39-54) E			
(21-38) F			
(1-20) G			
Not energy efficient - higher running costs			
England & Wales		EU Directive 2002/91/EC	

DIRECTIONS

CONTACT

Kendrick Property Services - Brighton  
10-12 Lewes Road  
Brighton  
East Sussex  
BN2 3HP

E:  
lettings@kendrickpropertyservices.co.uk  
T: 01273 699600  
www.kendrickpropertyservices.co.uk

